

## Visit the Mall!

Click Here!



The articles that appear in this e-newsletter are for general educational information **ONLY**. They do not necessarily reflect the opinions/policies of Papillon Haven Rescue (PapHaven).

Newsletter Subscription

Contact Pap Haven

### Become a virtual foster!

Click here to see how you can make a difference in a rescued Pap's life!

Follow us on

facebook

GoodSearch

### Post your recipes/ remedies to:

<http://health.groups.yahoo.com/group/PapRecipes>

### PHR Lending Library:

<http://butterflyboulevard.pbwiki.com/>



See More on pg. 8!

# PHR Fundraising Calendar

## Feb. 6-13 – Westminster Games

Link to appear soon on our PHR Website  
[http://www.paphaven.info/westminster\\_011.html](http://www.paphaven.info/westminster_011.html)

## March 20 - April 9 – Spring Auction

(Please send donations to Linda Ecklund ASAP!)

## April 18-23 – PCA National Speciality

Chattanooga TN (need booth workers)



An outreach e-communication from Papillon Haven Rescue

## Are you ready for Westminster?

Instead of a boring raffle number, you receive a group of dog breeds. If one of the breeds you hold wins a Group One you will be entered into a drawing to receive a Group One level prize. If your breed takes Best in Show (BIS) you will be entered into a drawing with the other BIS winners for the Grand Prize. The number of players holding Group and BIS winners depends on the number of entries sold.

The show will be telecast live on Feb. 14 & 15, from 8 to 11 p.m. on your local USA Network station. As you watch, check your breeds and see if you may be one of the winners! This game is great as it gives us an inspiration to learn about and cheer for different breeds. The great thing about Westminster is that it can be very unpredictable, which adds to the excitement.

The Herding, Hound, Non-Sporting, and Toy group competition will be televised live Monday on USA Network from 8-9 PM ET and continuing on CNBC from 9-11 PM ET. The Sporting, Working, Terrier, and Best-In-Show competition will be televised live Tuesday on USA Network from 8-11 PM ET.

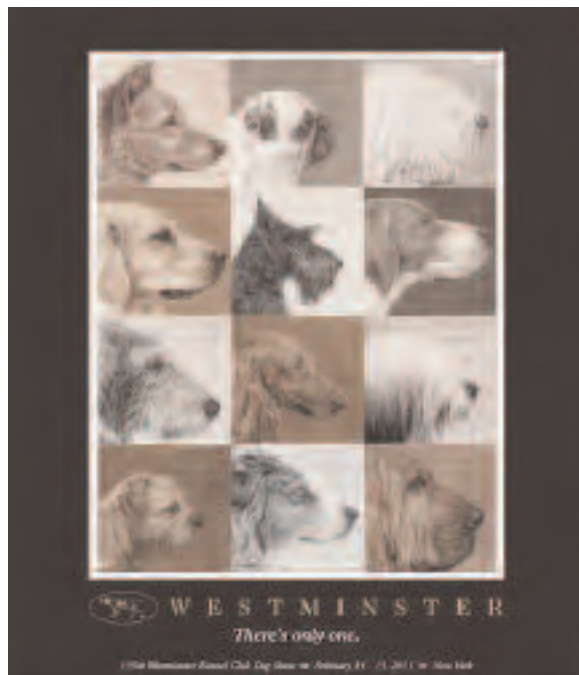
### OK... Ready to Play? Here's what to do:

Each Group of 5 breeds is randomly selected by computer and assigned in the order that entries are received to be absolutely impartial. No, you cannot pick your own group of breeds.

Visit [http://www.paphaven.info/westminster\\_011.html](http://www.paphaven.info/westminster_011.html) to get further information and to see the great prizes!

Each group of 5 breeds are \$10 or 15 breeds for \$20.

Please email [PapHavenRescue@yahoo.com](mailto:PapHavenRescue@yahoo.com) with your donation amount – then send your check to:



PHR Westminster Games  
c/o Jan Jorolan  
PO Box 20306  
Hot Springs, AR 71903

### No PayPal transactions for this game.

Jan will mail you a confirmation along with the breeds you are assigned. Then, just watch the Show!!!! If you are a lucky winner the postage is also included!! Your donations are what makes it possible for us to help Papillons in need find their own Forever Home!

**\*\*Please note!\*\*** This Fundraiser is open to persons in the continental US only. A purchase of one or more blocks is considered a commitment to donate that amount. This Fundraiser begins at 8 a.m. Feb. 6, 2011 and closes at midnight the evening before the Show (Feb. 14 at 12 midnight CST).

# When and how to brush your dog's teeth

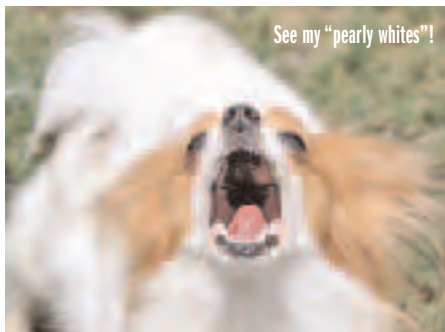
Dental health is just as important for dogs as it is for humans. Healthy dog teeth are an important part of having a healthy dog. Bacteria in the mouth can spread to other parts of the body and cause serious infections, just like they can in humans. That's why, ideally, you should be brushing your dog's teeth once a day, just like you would your own.

1. Make certain you are using a toothpaste or cleaning product that is designed for dogs. Human toothpastes have chemicals in them that can be toxic to a dog if swallowed. Since there's no good way to keep your dog from swallowing the things you put in his mouth (Have you ever seen a dog spit? Me neither.) you should only use special toothpaste for dogs that you find in the pet supply aisle.
2. Take your time. Before you even start using a toothbrush, allow your dog to get used to having your hands near his mouth. While the two of you are nice and relaxed, use your fingers to stroke his cheek like you would when you start brushing his teeth. You should also let him taste the



special toothpaste for dogs, which he will discover is a tasty treat.

3. Introduce the tooth brush. The first few times you introduce the tooth brush, you'll probably only end up brushing a few dog teeth at a time. Eventually, you can slowly work up to brushing all of your dog's teeth, especially the ones at the back. Don't worry about the insides. If you only brush dog teeth on the outside, you'll still get most of the plaque.
4. Stop while it's still fun. Whatever you do, you don't want to make your dog afraid of the tooth brush. If you always stop brushing your dog's teeth while he's still enjoying it, and praise him and snuggle him for the time he's spent with you, then tooth-brushing time will be a fun time for both of you to look forward to. That way you'll be able to happily brush dog teeth without a struggle.



One of the biggest advantages of brushing your dog's teeth regularly, and starting from an early age, is that if you can keep your dog's teeth clean and healthy then you may be able to avoid having to take your dog for a professional dog teeth cleaning (pdtc). Since a pdtc involves placing your dog under anesthesia, it's something most pet parents would probably prefer to avoid.

**Quick Tip:** When confronted by dog bad breath, don't just pick up a tooth brush — talk to your vet. Although bad oral hygiene is most often the cause of a dog's bad breath, it could reflect other health problems!

## February is Pet Dental Month

By: Alex Lieber - <http://www.petplace.com/dogs/february-is-pet-dental-month-2/page1.aspx>

Bad breath in a dog is often dismissed simply as "doggy breath." In fact, it may signal periodontal disease, which is the most common ailment suffered by dogs and cats over 3 years old. Preventing periodontal disease can result in longer, healthier lives for pets.



To educate owners of this, February has been designated National Pet Dental Month by the *American Veterinary Dental Society*, *American Veterinary Medical Society*, and *Hill's Pet Nutrition*.

Unfortunately, dental care is often ignored by owners. One survey notes that just 1 out of 10 owners makes sure their pets' teeth are cared for. Although dogs and cats rarely get cavities, the plaque and tartar that do form can cause gingivitis and periodontal disease. This can lead to tooth decay, bleeding gums, and tooth loss. The bacteria that causes all this can travel through the bloodstream and eventually damage the major organs.

Proper pet dental care begins with a trip to the veterinarian for a dental exam, which should be done once a year. If your vet sees plaque or tartar buildup, a cleaning may be necessary.

Afterwards, it is important to begin a home dental program. This is done easier when your pet is very young, so he or she is used to brushing. Nutritional supplements and specially formulated foods designed to remove buildup are effective, also. Look for the "Seal of Acceptance of the Veterinary Oral Health Council" on foods to determine if they meet the defined standards for plaque and tartar control.

**Don't forget - make donations thru paypal**

<https://www.paypal.com/cgi-bin/webscr>

Remember - all donations are tax deductible!

**PLEASE!** Feel free to cross-post our news!



[www.paphaven.org](http://www.paphaven.org)  
Issue 60  
February 2011

As of 1/31/11:  
867 rescues

The Way Home is a monthly e-publication for the members/ supporters of the Papillon Haven Rescue (Paphaven).

### Newsletter deadline

Materials and color photos for the next issue must be received by the 15th of the month prior to publication. Send materials to: [norajl169@yahoo.com](mailto:norajl169@yahoo.com)

**PHR Director:**  
Jan Jorolan (AR)  
Donna Moore (TN)  
James Watson (TX)

**Editor:**  
Nora J. Lenahan (PA)

**Advisory Board:**  
Rita Charvat (MI)  
Linda Fleisch (NY)  
Bob Foulk (OH)  
Angela Hubbard (IN)  
Joshua Ray (GA)  
Pat Schmidt (OH)  
Andy Watson (TX)

## Ice-Melt Poses Pet Risks

When protecting dogs from harsh winter conditions, don't overlook the paws.



Rock salt (sodium chloride), a common ice-melting agent, can irritate pets' paws, mouths, and gastrointestinal systems and trigger seizures when ingested in large quantities.

Alternative ice- and snow-melt products, with names like "Safe Paw," "Safe-T-Pet," and "Ice Melt for Pets," may be less irritating, but still can pose risks. Some include magnesium, calcium, potassium, or urea, which also can pose problems when consumed in large amounts, says Camille DeClementi, senior toxicologist for the Animal Society for the Prevention of Cruelty to Animals (ASPCA).



"We worry that if pets ingest a fair amount, it will change the electrolyte balance in their bloodstream," Dr. DeClementi says. Among the possible effects: dehydration, kidney failure, heart arrhythmia, and seizures.

What puts pets at risk? Piling product on sidewalks rather than sprinkling as directed, or accidentally leaving open bags where they're accessible to pets. In cases of concentrated ingestion, a urea- or calcium-based product generally poses less risk than products with other common ingredients, Dr. DeClementi says.

She recommends wiping pets' paws down after walks and keeping fur between paw pads trimmed but not too short. If an animal exhibits lethargy, vomiting, diarrhea, twitching, or trembling, call your vet or Animal Poison Control Center (888-426-4435) and have product label nearby for reference.



## We a "Well-Educated" Owner ... Name THAT Bite ...

[http://www.dentalvet.com/vets/basicdentistry/name\\_that\\_bite.htm](http://www.dentalvet.com/vets/basicdentistry/name_that_bite.htm)

OR <http://www.workingdogs.com/doc0089.htm>

What is really meant by the terms: overbite, open bite, overjet, level bite, over-shot, underbite, anterior crossbite, wry bite, retained deciduous teeth, base narrow canines? Breeders, show judges, veterinarians and others who want to express specific dental conditions in dogs and cats need to use the



### Anatomy

Dogs normally have twenty-eight deciduous (primary or baby) teeth that erupt during the first six months of life. Most breeds have forty-two adult teeth. Cats have twenty-six deciduous and thirty adult teeth. There are four types of teeth. Incisors are the smaller teeth located between the canines on the upper and lower jaws. They are used for grasping food and help keep the tongue within the mouth. Canines (also called cuspids or fang teeth) are located on the sides of the incisors and used to grasp food. Premolars (bicuspid) are for shearing or cutting food and are located behind the canines. The molars are the last teeth in the mouth. They are used for grinding nourishment for entry into the esophagus.



### Missing or Extra Teeth

Dogs and cats are frequently born without the proper number of teeth. Extra (supernumerary) teeth can cause periodontal disease from over crowding. The American Kennel Club sets the standards concerning minimum number of teeth for each breed of dog that can be shown. Dental x-rays can be safely taken as early as ten weeks of age to evaluate if the correct number of adult teeth



are present. This is recommended as a part of the prepurchase examination in certain breeds.

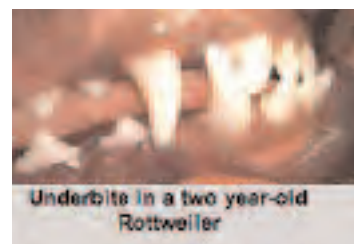
### Occlusion

The way teeth align with each other is termed occlusion. Normal occlusion in most breeds consists of the upper (maxillary) incisors just overlapping the lower (mandibular) incisors (scissor bite). The lower canine should be located equidistant between the last (lateral) incisor and the upper canine tooth. Premolar tips of the lower jaw should point between the spaces of the upper jaw teeth. Flat faced breeds (Boxers, Shih-Tzu, and Lhasa Apso) normally do not have scissor bites.



### Malocclusion

Malocclusion refers to abnormal tooth alignment. Overbite (overshot, class two, overjet, mandibular brachygnathism) occurs when the lower jaw is shorter than the upper. There will be a gap between the upper and lower incisors when the mouth is closed. The upper premolars will be displaced at least twenty-five percent toward the front, when compared to the lower premolars. An underbite (undershot, reverse scissor bite, prognathism, class 3) occurs when the lower teeth protrude in front of the upper jaw teeth. If the upper and lower incisor teeth meet each other edge to edge, the



occlusion is an even or level bite. When the upper and lower incisors do not overlap or even meet each other when the mouth is closed, the pet has an open bite. Anterior crossbite

(continued on pg. 4)

# Name that bite

occurs when the canine and premolar teeth on both sides of the mouth occlude normally but one or more of the lower incisors are positioned in front of the upper incisors. Anterior crossbite is the most common malocclusion, is not considered genetic or hereditary, and is correctable. If there is an anterior crossbite there must be a condition termed posterior crossbite. Posterior crossbite occurs when one or more of the premolar lower jaw teeth overlap the upper jaw teeth. This is a rare condition that occurs in the larger-nosed dog breeds. A wry mouth (right) or bite occurs when one side of the jaw

(continued from pg. 3)



grows longer than the other. It is considered hereditary and difficult to correct. Base narrow canines occur when the lower canine teeth protrude inward and can damage the upper palate. Often this condition is due to retained baby teeth and can usually be corrected through inclined planes used to push the teeth into normal occlusion.

## Dropped pills top list of toxins poisoning pets in America

[http://www.huffingtonpost.com/2011/01/28/pet-poisons-dropped-pills-top-list-of-toxins-poisoning-pets\\_n\\_815604.html](http://www.huffingtonpost.com/2011/01/28/pet-poisons-dropped-pills-top-list-of-toxins-poisoning-pets_n_815604.html)

**H**uman medications including dropped pills sickened more pets in the U.S. last year than any other toxin.

It's the third year in a row that human medications top the American Society for the Prevention of Cruelty to Animals' (ASPCA) list of top 10 toxins, which will be released Friday, Feb. 4.

Over-the-counter medicines with acetaminophen and ibuprofen, attention deficit hyperactivity disorder medicine, and antidepressants topped the list.

Janet Hardie in Groveland, Calif., knows the danger well: Earlier this year, she brought home incontinence pills and set them on a table beside her chair in the living room. A while later, she looked down and Priscilla, her year-old Ihasa apso, was tearing into the blister pack.

"She had eaten three. At least I couldn't find them," Hardie said.

She and her neighbor called the ASPCA hotline in Urbana, Ill. A veterinarian had them weigh the dog and read the prescription information, then feed the dog a half piece of white bread and two teaspoons of hydrogen peroxide. Then they kept Priscilla active so the contents of her stomach would fizz and she would vomit within 15 minutes.



"The doctor was on the phone for about an hour," Hardie said. "It was like having her here, she was so precise."

About a quarter of the 168,000 calls received by the hotline in 2010 were about pets who had swallowed human drugs, said Vet Tina Wismer, senior director of veterinary outreach and education at the center.

The Pet Poison Helpline in Minneapolis, MN, run by SafetyCall International, has handled more than 750,000 calls since 2004, said Vet Justine Lee, the helpline's associate director of veterinary services. She estimated half their calls are about human medicine.

The poison centers do not track deaths because there are too many variables.

Pet owners won't always know what their animals have gotten into – they just know they are showing symptoms like lethargy, vomiting, depression, seizures or refusing food.

A dog who has swallowed pills to treat ADHD will get agitated. What happens when a pet gets hold of birth control, Viagra and Rogaine pills?

"Luckily birth control pills today have very small amounts of estrogen in them. We use Viagra for dogs with pulmonary hypertension and it was originally marketed to regulate blood pressure. Rogaine can be very dangerous, especially in cats, and can cause heart failure," Wismer said.

One aspirin or one heart pill probably won't kill a pet, but a month's supply, a big

(continued on pg. 5)

## Book reviews –

### 'We're All Ears!'

**Editor's note:** At this point, we have reviewed ALL of the books in our library. As new books are entered, we will feature them as our "book-of-the-month." But for now, we will begin offering reviews of books that are recommended by our membership.

### Every Dog Has a Gift: True Stories of Dogs Who Bring Hope & Healing into Our Lives

by Rachel McPherson

**I**nspiring stories of dogs who do good.

Anyone who has ever had a relationship with a dog will tell you: They want nothing more than to give love and be loved in return.

In *Every Dog Has a Gift*, Rachel McPherson draws on her experience as the founder and executive director of *The Good Dog Foundation*, the largest animal-assisted therapy organization on the East Coast, to share the amazing stories of dogs that bring hope and healing into our lives.

Much has been said about the heroic roles dogs played following Sept. 11th and Hurricane Katrina in providing support and comfort for the families and victims of these terrible tragedies, but the truth is that millions of dogs around the world are heroes every day. These therapy and service dogs (and often quite ordinary, "uncertified" dogs just like your own!) can:

- serve as the perfect audience for kids who need help with practicing and improving their reading skills;
- hold troubled families together;
- provide a calm and centering presence for autistic children, and
- help individuals who have lost the ability to walk to more easily navigate the world.

*Every Dog Has a Gift* is a celebration of the gift that each and every dog possesses: the ability to bring the healing power of unconditional love into our lives.



**PLEASE!** Feel free to cross-post our news!

## Dropped pills (continued from pg. 4)

bunch of grapes, a few bars of dark chocolate, or a single lily could.

Insecticides, rodenticides, people food, veterinary medications, chocolate, household toxins, plants, herbicides, and outdoor toxins (like antifreeze and fertilizers) round out the top 10.

Pills don't take a holiday, but some of the toxins on the list seem to.

"Chocolate season" stretches from Halloween to Valentine's Day. And the darker the chocolate, the deadlier it is.

Over the past few years, there has been a slight increase in number of chocolate-caused deaths and a larger increase in the number of dogs ingesting life-threatening doses of methylxanthine, which is found in chocolate, Wismer said.

"Dogs love chocolate and they are gluttons. They won't stop eating," Wismer said.

It would take about an ounce of milk chocolate per pound of dog to be deadly, but only an eighth of an ounce of really dark chocolate per pound, she said.

Past Valentine's Day lurks the danger of Easter — the time when cats come in contact with deadly lilies. If a cat bites on a leaf or bats at a lily and gets pollen on its paw, then licks it off, leave for the vet immediately, Wismer said.

Researchers have only determined in the last four or five years that grapes and raisins are toxic to dogs.

"They don't know what it is in them that makes this happen, but three-quarters of a pound of grapes can cause very significant toxicity in a dog," said Portland, Ore.-based vet Jeffrey S. Klausner, chief medical officer of Banfield Pet Hospital, the largest animal hospital in the world with 770 clinics in 41 states.

Alcohol — especially cream-based drinks like Russian eggnog — can make an animal very drunk very quickly. The animal will wobble, vomit, maybe inhale vomit into its lungs and become comatose, Wismer said. The majority of those calls come in on New Year's Day, she said.



## Does Fido 'need' a coat?

# Ready for Winter?

by Gwendolyn Bounds — <http://finance.yahoo.com/family-home/article/111933/ready-for-the-dog-days-of-winter>

*Is a \$175 Bella Lucca faux mink coat for dogs medically necessary?*

Pricey couture is optional, but some breeds do need outerwear in the winter, veterinarians say. Small, short-haired, inactive dogs without a thick fur undercoat are more susceptible to cold weather.

Breeds include the Chihuahua, dachshund, Boston terrier, shih tzu, bichon frise, miniature pinscher, and the xolo, a Mexican hairless dog.

"There's no question in winter with rain, snow, and ice that these dogs are more at risk because of their size and inability to keep body heat," says Rene Carlson, president-elect of the *American Veterinary Medical Association*.

Normal dog body temperature runs 101 to 102°. A drop in body temperature of five or six degrees can put dogs at risk of low blood pressure and kidney damage, as well as decreased blood flow to the liver and brain, which can possibly lead to hypothermia.

Elderly or ailing animals may need to don extra layers, regardless of their breed, says Stephen Zawistowski, science adviser to the *American Society for the Prevention of Cruelty to Animals* (ASPCA).

There are plenty of pet apparel purveyors these days. Outdoor retailer *REI* sells \$40 "Adventure Dog Boots" with recycled tire rubber soles, while *etsy.com* offers a crocheted acrylic / wool cap for toy breeds.

Bigger breeds bred for outdoor life and work, such as the Labrador retriever, German

Bread made from scratch can also be a problem. "The reason the dough is rising is because it produces gas, but it also produces alcohol so we can get drunk dogs that way too," Wismer said. In addition, the dough will continue to expand inside the dog, she said.

She also reports an increasing number of marijuana calls recently. "Dogs and cats like to chew on plants," and munching on marijuana plants can increase their blood pressure.



Chili Sundberg

shepherd, and Siberian husky, typically can stick it out in the buff, so long as they are active on walks or have a sheltered spot with lots of bedding and a nutritious, plentiful diet if left outdoors, vets say.

"When we think of the working and sporting dogs, these are the ones less likely to need protection," Dr. Zawistowski says. "Lap dogs need it the most."

Useful garb may include: wool and polyester sweaters, fleece or waterproof jackets, and booties to protect from ice and salted streets and sidewalks. Indoors, extra layers can help, too.

There are also bed warmers, such as the *Pet-zzz-pad*, an American Kennel Club-licensed item, with cords encased in steel chew-resistant casing.

Less useful, Dr. Carlson says: hats and goggles, which can throw off an animal's equilibrium. "Dogs have a very good blinking response and a third eyelid that comes up if there's need for protection."

Keeping Fido warm doesn't have to cost a fortune. A child's sweatshirt from a thrift shop cut to fit and bundled under a dog's belly with a zip tie can do the trick.

"When you're spending \$250 on a designer coat, that's so you can be seen with the dog in the coat, not for the dog," says Dr. Zawistowski says.

**Editor's note:** While papillons were not specifically mentioned in this article, it can't hurt for some of our smaller friends to be bundled up to venture outdoors — especially if they will be out for more than a few minutes to do "business." As temperatures drop, our smaller paps do not have the body mass to stay warm for very long. As always, Papillons are not able to spend enduring lengths of time in the severe cold temperatures!

Write to Gwendolyn Bounds at [wendy.bounds@wsj.com](mailto:wendy.bounds@wsj.com)

# Are you headed to Tennessee?

In the midst of the snowbanks, you may not believe it, but it's time to start thinking about Spring and the Rescue Parade at the 2011 Papillon Club of America, (PCA) National Specialty.

The National Specialty dates are Monday, April 18th thru Friday, April 22nd at the Chattanooga ChooChoo Hotel – Holiday Inn 1400 Market ST Chattanooga, TN.

Reservations can be made through the following numbers: 423-266-5000 or 800-872-2529.

**You must identify yourself as guests of the PCA National Specialty in order to receive the special pricing of \$99 plus tax per night for a room. Discounted reservations are only available until March 27, 2011.**

For more information about the National, please click on this link:

[http://www.papillonclub.org/2011\\_Specialty/index.htm](http://www.papillonclub.org/2011_Specialty/index.htm)

### PHR in attendance

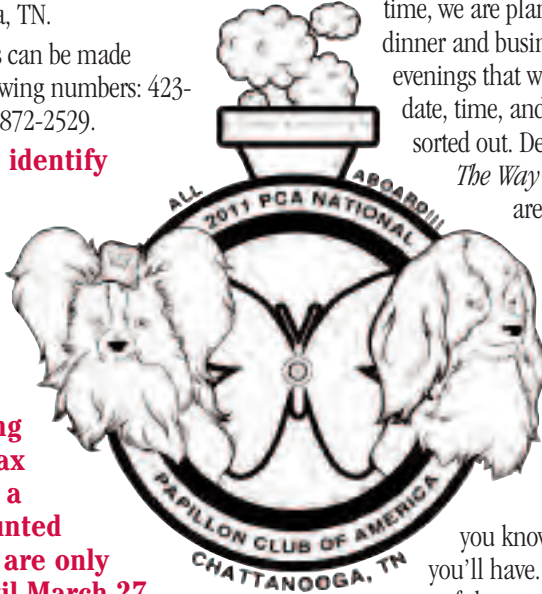
As in 2010, PHR will again make its presence known at Nationals! And we hope to do better than last year – by expanding our sales

and better educating everyone about rescue! If you plan to attend Nationals and can help PHR in the booth, please let Nora know at [nora-jl169@yahoo.com](mailto:nora-jl169@yahoo.com). Nora will handle scheduling of personnel to work the booth. If things work out as well as they did last year, there is plenty of coverage and lots of time to see the sights, watch the judging, and have some quality time with our PHR brethren. At this time, we are planning to have a PHR dinner and business meeting one of the evenings that we are in Tennessee; but date, time, and location are still being sorted out. Details will be published in *The Way Home* as soon as things are finalized.

### Ellen Stuban writes:

In order to make sure we're set I need to know if you'll be attending. If you've been to a Rescue Parade in the past, then you know what a great time you'll have. If you've never been to one of these events, here's what it's all about. PCA has a tradition of dedicating the show ring to our wonderful second chance furbabies at the National Specialty. Each person attending receives a goody bag filled with surprises and each dog has a biography that is read as they parade around the ring with their person(s).

**The Rescue Parade is scheduled Friday, April 22 - 8 a.m.**



### In the Bakery Window ...

## Valentine's Day Sweet Pooch Pancakes



### Ingredients:

- 2 large eggs
- 1 cup milk
- Cooking spray
- 1 cup plain yogurt
- 1 tablespoon honey
- 1 cup whole wheat flour
- 1/2 cup all-purpose flour
- 1 teaspoon baking powder
- 1/2 teaspoon ground cinnamon
- 2 cups sliced banana, berries and mango
- 1 1/2 tablespoons butter, melted, or vegetable oil

### Directions:

Preheat a griddle or large nonstick skillet over medium heat. In a medium bowl, whisk together the eggs, milk, butter and honey. Gently whisk in the 2 flours, the baking powder and cinnamon.

Spray the griddle with cooking spray. Drop the batter, 2 tablespoons at a time, onto the greased griddle; cook until bubbles begin to form and break, about 3 minutes. Press a few pieces of fruit into each pancake, then flip and cook until brown on the bottom, about 2 minutes. Drizzle with the yogurt and top with the remaining fruit.

[www.bringfido.com](http://www.bringfido.com)

# BringFido

Speak to a pet-friendly travel expert at 877-411-FIDO

## Dog Friendly Vacations

Need help deciding where to bring Fido on vacation this year? *Bring Fido's* (BF) dog friendly city guides rank more than 10,000 cities worldwide for their popularity among dog owners and general "dog friendliness." Dig in to see the most popular destinations, or in your own neck of the woods. Once you've narrowed it down to a particular city, we'll give you the best places to stay, play, & eat with Fido when you're there. PapHaven receives \$5 for each reservation made through BE. **Use Referrer ID:** *paphaven*.



2010 PCA Rescue Parade Medal Recipients

## I Rescued a Human Today

Her eyes met mine as she walked down the corridor peering apprehensively into the kennels. I felt her need instantly and knew I had to help her. I wagged my tail, not too exuberantly, so she wouldn't be afraid.



As she stopped at my kennel I blocked her view from a little accident I had in the back of my cage. I didn't want her to know that I hadn't been walked today. Sometimes the shelter keepers get too busy and I didn't want her to think poorly of them.

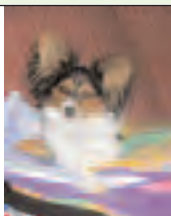
As she read my kennel card I hoped that she wouldn't feel sad about my past. I only have the future to look forward to and want to make a difference in someone's life.

She got down on her knees and made little kissy sounds at me. I shoved my shoulder and side of my head up against the bars to comfort her. Gentle fingertips caressed my neck; she was desperate for companionship.

A tear fell down her cheek and I raised my paw to assure her that all would be well. Soon my kennel door opened and her smile was so bright that I instantly jumped into her arms. I would promise to keep her safe. I would promise to always be by her side. I would promise to do everything I could to see that radiant smile and sparkle in her eyes. I was so fortunate that she came down my corridor. So many more are out there who haven't walked the corridors. So many more to be saved. At least I could save one.

**Have a new  
foster?**

Order your foster  
goodies here!!!



## Headed to Tennessee?

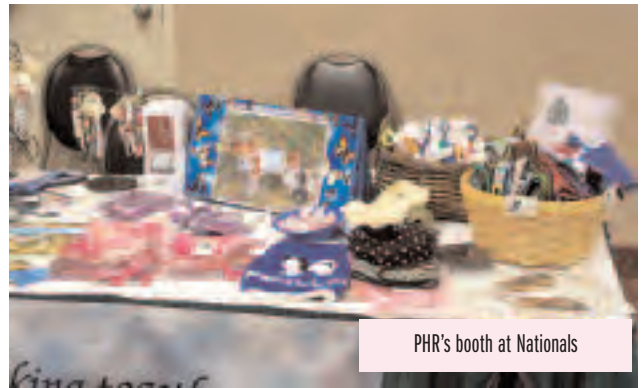
(continued from pg. 6)

If you plan to attend and participate in the Rescue Parade, Ellen Stuban needs 2 things from you by Friday, March 4th.

- 1) Please send me an email with your contact information and the name of your Papillon.
- 2) I need a short biography about your Papillon and a picture of him or her.

These biographies will be assembled into a booklet and read out loud as our furkids are walked around the show ring in their special moment. The bio needs to be no more than 3/4 page long and in 16 pt (large) font. If you've attended in the past, I have your bio. Please let me know if you'd like me to send it to you for updating, otherwise I'll use what I have. If you would like a sample bio from previous years, please Ellen me know.

For planning purposes it's easier to cancel than to add, so if you are thinking of coming and your rescued Papillon is to be in the



parade, please let me know as soon as possible. All that is needed to begin is the the name of your rescue for the parade. Of course, if you have any questions, please contact me at any time at [estuban01@comcast.net](mailto:estuban01@comcast.net).

### Goody Bags

Ellen is also looking for donations of items for the goody bags. If you're able to help out, please let her know. PHR will again be providing small "gift bags" of Snickerpoodles to the bags. "In past years, we've been fortunate to have lovely surprises to include in the goody bags."

## Show schedule

### Monday, April 18th

- 6:30 - 8 a.m. — Hospitality Suite Open
- 9 a.m. — "Breeding Better Dogs," Dr. Carmen Battaglia Seminar
- 6:30 p.m. — Agility\*\*

### Tuesday, April 19th

- 6:30 - 8 a.m. — Hospitality Suite Open
- 8 a.m. — Obedience/Rally\*
- 11 a.m. — Open Board Meeting
- 3 p.m. — Puppy & Veteran Sweepstakes\*
- 7 p.m. — Welcome Party — Hospitality Suite

### Wednesday, April 20th

- 6:30 - 8 a.m. — Hospitality Suite Open
- 8 a.m. — Conformation Judging - Dogs, Veteran Dogs\*
- (Lunch Break at Judges Discretion)
- 3 p.m. — Annual General Meeting
- 6:30 p.m. — Phalene Banquet  
Phalene Fun Match

### Thursday, April 21st

- 6:30 - 8 a.m. — Hospitality Suite Open
- 8 a.m. — Conformation Judging Bitches and Veteran Bitches\*
- (Lunch Break at Judges Discretion)

**An hour after judging** — Judges Education Seminar

**An hour after judging** — Genetics Seminar

- 7:30 p.m. — Top 20 Competition with Live Auction\*

### Friday, April 22nd

- 6:30 - 8 a.m. — Hospitality Suite Open
- 8 a.m. — **Rescue Parade /**  
Parade of Title Holders
- 10 a.m. — Conformation Judging - Intersex, Jr. Showmanship, Non-regular\*
- (Lunch Break at Judges Discretion)
- 4 p.m. — Champagne Celebration for 2010 Award Winners, 2011 National Winners, & Announcement of Top 20 Winner

\* — Ballroom

\*\* — agility will take place @ Play Dog Excellent  
4113 Dayton Blvd, Chattanooga, TN

## Pap-of-the-Month:

### Kiwee & Todd

**H**andsome Kiwee is an 8 yr old Male, 14 lbs, gorgeous sable and white in color, sweet eyes, marked with a beautiful and distinctive blaze of white on his forehead. He is a gentle soul looking for a nice, devoted forever family to love him as much as he loves them. He will follow you around wherever you go and becomes quickly attached. He gets along well with children and also any other dogs that you may have in your household. He loves to go for walks and even cruises well in the car. So, you can pretty much take him anywhere! By the way, he loves cats, too! But, perhaps they may not love him as much because he likes to chase them and try to play with them! Kiwee is a beautiful, gentle pap and will give many years of kindness and adoration to the caring family that adopts him. Are you looking for that special someone to be as kind, loving and devoted to you as you are to him? Then look no more! You have found your forever dog and his name is Kiwee!



Kiwee

**H**i everyone – My name is Todd and I am a super-sized papillon weighing in at 18 lbs. I am very handsome and can turn on my charm at a moment's notice. I have wonderful house manners and get along with the other dogs in my foster home. My favorite game is to run and play chase with the other dogs in my foster home and one of my favorite hobbies is eating. Since I am a larger papillon, my foster parents watch how much I eat but just to prove what a good guy I am, I never try to sneak more from the other furbies in the house. I really would like to be in a home where there is some activity happening but I am also content to sit next to my person on the sofa. I am just sitting here, in my foster home, waiting for YOU to adopt me. So, come on, don't wait ... fill out that application so we can go off into the sunset together.

Love, Todd



Todd

## More ways to help PHR ...

**Be sure to check out the PHR Events Calendar at**

<http://www.paphaven.info/events.html>

**For up-to-date details regarding pet events across the nation!**

**Help PapHaven Rescue every time you search.**

**It's that easy!**

*(Remember: you must be logged-in to iGive before you begin your search!)*

iSearch|Give™

Shopping opportunities



amazon.com

**Save a Dog!**

*(iGive has over 560 stores to shop from. Enter the site as a Pap Haven supporter and PHR gets a percentage in return)*

[www.igive.com](http://www.igive.com)

## Help wanted!

### What do you feed your dog?

**I**f the answer is Natural Balance, then we need your help!

Van Patten's

Natural Balance Pet Foods has offered to make a donation to a rescue group if they can save 50 bar code / purchase receipts from their foods (specific flavors don't matter). They do require 50 bar codes before they accept a submission.

If you can help, please send your bar codes and receipts to **Stephanie Sherwin** – she will collect and then mail in the necessary paperwork when we have enough for submission. This is a continuous program – so please save them!

**Please send to:** 4 Woodsong, Roland, AR 72135



### Introducing PapHaven Rescue – [www.paphaven.org](http://www.paphaven.org)

**T**his group came about through the love of a small deaf puppy that required transport halfway across the country to her new home. It took the effort and dedication of people from Texas to Washington D.C. and on to Ohio. It took the cooperation of three other rescue groups. In the end, it took the hearts of every one. It is this good will and renewed faith in the goodness of people everywhere that led us in forming Papillon Haven Rescue (Pap Haven). We are a 501(c)3 non-profit organization, all volunteer National group specializing in Paps and Papillon mixes, their rescue, and rehabilitation.

Since then, PapHaven Rescue has grown dramatically and continues to grow and evolve to try to meet the changing needs of rescue and the on-going saga of Papillons in need... where ever they are.

We would like to invite you to join in our rescue efforts. With hands reaching out across the country, we can form a circle of love and caring that refuses to let even one Papillon in need fall through the cracks. We are not in competition with any other rescue groups. In fact, it is our goal to work hand in hand with every rescue group and shelter that will join us in this effort. We will not ask for perfect lineage, origins, or looks. We will coordinate with other groups for transporting each other's breed. We welcome volunteers, sponsors, interested folk, contributors, and especially kind words.

Our eNewsletter, *The Way Home*, will try to bring informative articles, feature stories, announcements, upcoming events, and urgent alerts about situations where the need for rescue is great.





# Foster Families URGENTLY Needed

Established in 2003, PHR has placed many Papillons into their forever homes. Many have been owner surrenders, shelter surrender as well as stray rescues. Our members pride themselves in finding the best possible homes for our Papillons.

## **But it's impossible to do without foster homes!**

All of our rescued Paps go through a screening process, are altered, and fully vetted prior to placement. We are a national group of volunteers spanning the US who do this just because we love the breed and are trying to protect and preserve it! During their time with us in foster care, we work on crate training, socialization, basic obedience, and housetraining, so that the transition period is smoother once placed into their forever homes.

If you are interested in:

**Adopting / Fostering / Volunteering**

**Please contact PHR at (501) 865-4442**

**Email:** [jorolan@catc.net](mailto:jorolan@catc.net) or [dogmom5@twcnny.rr.com](mailto:dogmom5@twcnny.rr.com)

**Website:** [www.paphaven.org](http://www.paphaven.org)

*"Dogs come into our lives to teach us about love ...  
they depart to teach us about loss.  
A new dog never replaces an old dog, it merely expands the heart.  
If you have loved many dogs, your heart is very big." Erin Joyce*

